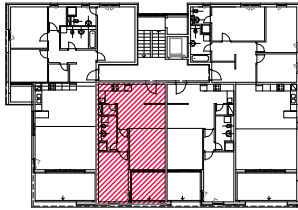


# STAN 19

3. KAT



INVESTITOR GRAĐEVINA PROJEKTANT  
 QUATRO COMPANY d.o.o.  
 ZGRADA 2 DUILOVO  
 STANISLAV MLADINIĆ d.l.a.

**Quatro**  
 COMPANY

## STAN 19

3. KAT

| POVRŠINE                |       |   |      |              |
|-------------------------|-------|---|------|--------------|
| KUHINJA, BLAG., ULAZ    | 19,57 | X | 1,00 | 19,57        |
| DN. BORAVAK             | 12,00 | X | 1,00 | 12,00        |
| KUPAONICA               | 5,12  | X | 1,00 | 5,12         |
| SPREMA                  | 1,19  | X | 1,00 | 1,19         |
| HODNIK                  | 1,85  | X | 1,00 | 1,85         |
| SOBA                    | 12,15 | X | 1,00 | 12,15        |
| <b>UKUPNO ZATVORENO</b> |       |   |      | <b>51,88</b> |
| LOBA                    | 8,37  | X | 0,75 | 6,28         |
| <b>UKUPNA POVRŠINA</b>  |       |   |      | <b>58,16</b> |

